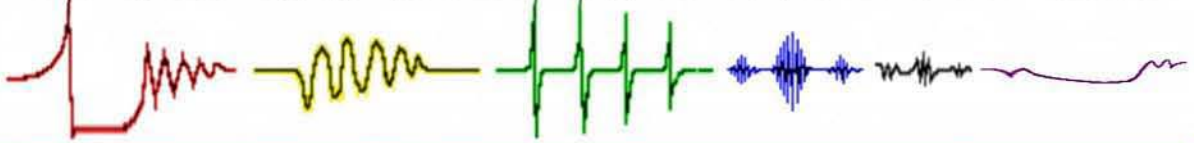


Establishing the criteria for different pipe systems & Analysis
 Interpreting the pressure behavior, plots, FFTs, oscillographs - Diagnostics.
 Before routing problem pipework, buying the wrong pump, **PulseView & ShockView** Prediction.

Publications - introduction to Pulse & Shock Analysis, Diagnostics, and software predictive models.

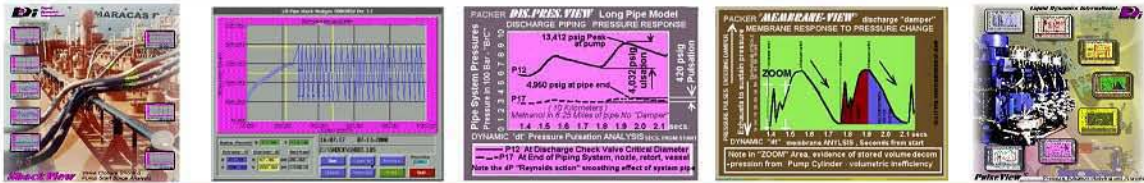
Pub. 2 From 30 years experience :
 Reading oscillograph pulsation "signatures", to identify the causes.



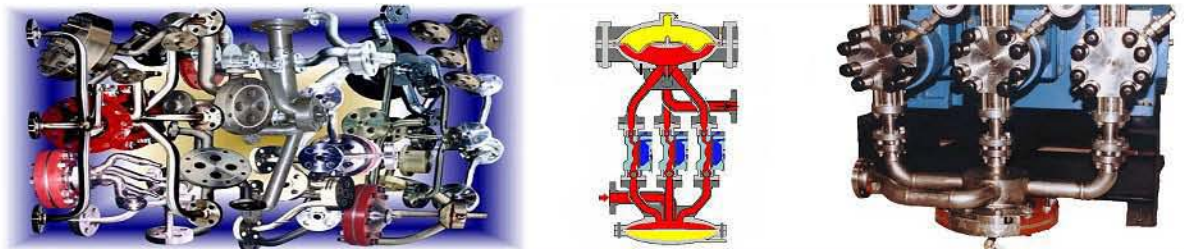
Pub. 3 Recording a system; data capture, some bare essentials, equipment characteristics.



Pub. 4 Predicting Pulsation, or Pipe Shock. Input data for **PulseView or ShockView** software.



Pub. 5 A pound of Prevention is worth a cart load of Cure; Designing the Pipes, stops interaction.



Pub. 6 How much pulsation is allowable for a given system? Calcs, Graphics, & Nomogram.

